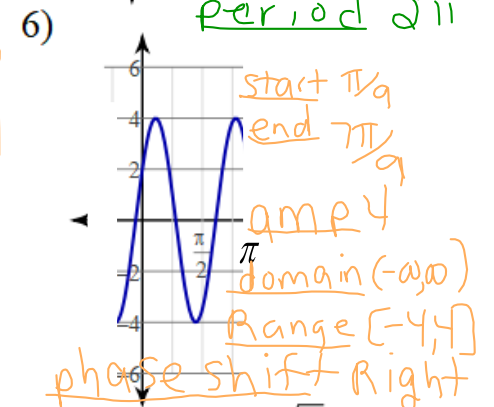
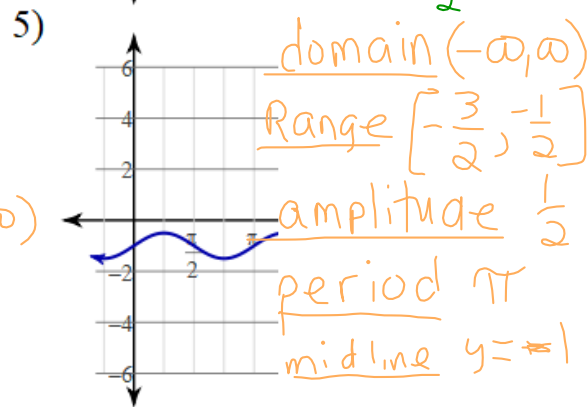
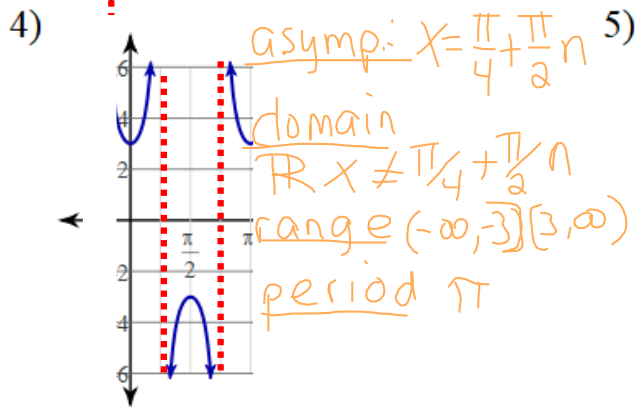
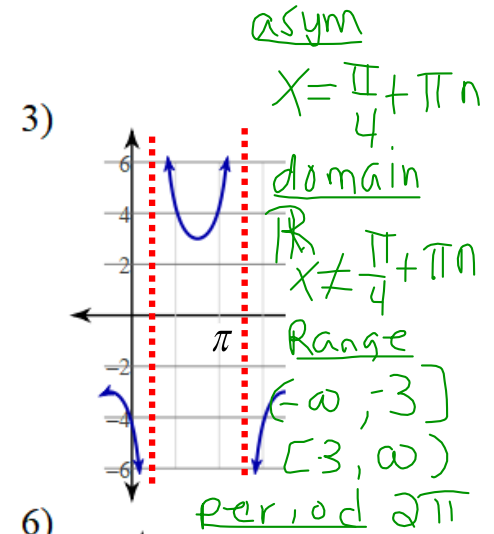
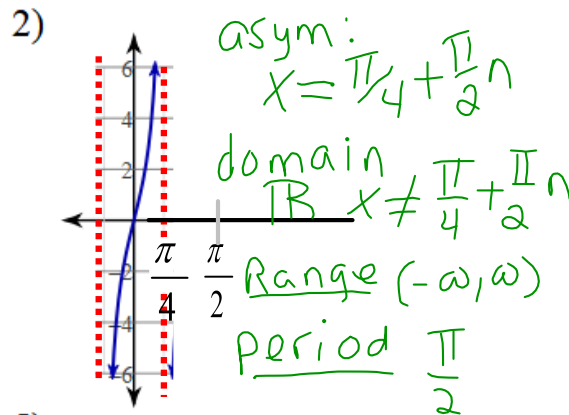
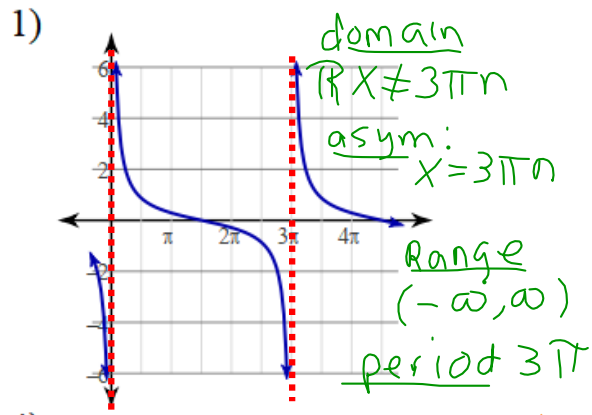


Answers to 2-12-18 worksheet 4.5-4.6 practice



7) $\frac{19\pi}{30}$ and $-\frac{101\pi}{30}$

8) $\frac{9\pi}{4}$ and $-\frac{7\pi}{4}$

9) -2

10) $-\sqrt{3}$ $\frac{\pi}{9}$

11) $\frac{31\pi}{36}$

12) 1005°

13) 4.7

14) 6.6